

| Project Scope Overview | |
|------------------------|---------------------------------------------------------------------------------------------------------------------------------------------------------------------------------------------------------------------------------------------------------------------|
| Customer: | Wrexham Borough Council |
| Installer: | Olympic Communications |
| Site Location: | Lambpit Street, Wrexham |
| Requirements: | <ul style="list-style-type: none"> • 1548 Unshielded Twisted Pair outlets in total • Multi mode fibre inter building links • New communications room • Gigabit \ Fast Ethernet supporting a range of Windows applications |
| Equipment: | Category 6 UTP |



Project Brief

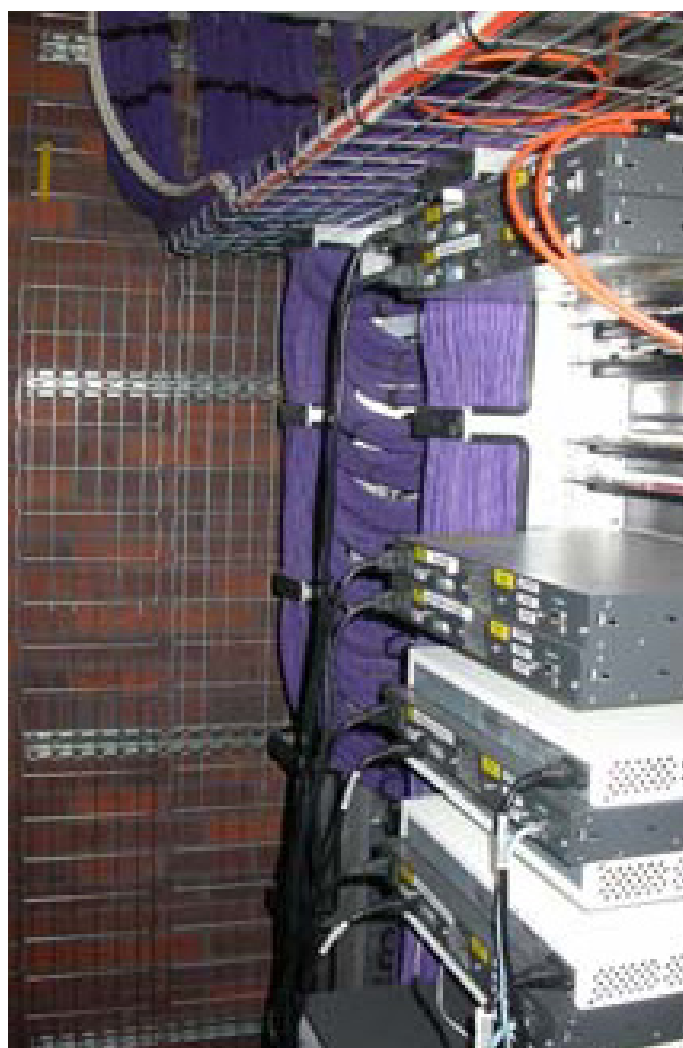
Install a structured cabling solution across all four floors of Lambpit Street offices that would support Gigabit Ethernet on all connections without interfering with the normal working hours of the Borough interfering with the normal working hours of the Borough offices. Upgrade the external telecoms Wrexham Borough council reception and fibre links to the Old Library (Data Centre), Guildhall and Library. To be completed for January 2005.

Project Summary

The Category 3 cabling installed in 1991 in Lambpit Street had served its time and it was common for problems to occur on the longer cable runs. The decision was made to upgrade to a Connectix Category 6 cabling solution installed by Olympic Communications. The main issue was 'when'. The Council offices supply critical services to the local community and closing for even a day was not an option. Olympic working closely with the IT department devised a schedule which allowed Olympic to systematically cable each department between 6pm and 8am over an 8 week period. This proved effective but every shift had its own deadline and links had to be installed and work areas cleaned ready for the council employees arrival at 8.30 am. The old network had to remain in place until new Category 6 cabling system, voice backbone and fibre network were in place before a controlled migration across.

"The Lambpit Street project was delivered on price and on time in difficult circumstances when you consider we had to ensure the Council services had to remain open during the whole period of the project!! Since the installation was completed we have had no issues with any links"

Ralph Hardy, Support Services Manager, Wrexham Borough Council



Structured cabling dressed and punched into an open frame.